

U15-3

For Earth, For Life
Kubota

Kubota Mini-Excavator



Note: Standard and optional equipment may vary by country.
So please consult your Kubota dealer for details.

World-class SUPER Mini!

U15-3

Ultra maneuverable, super efficient performance for wide range of job in close quarters.

When you have to take on a tough job in a tight space, look no further than the versatile U15-3.

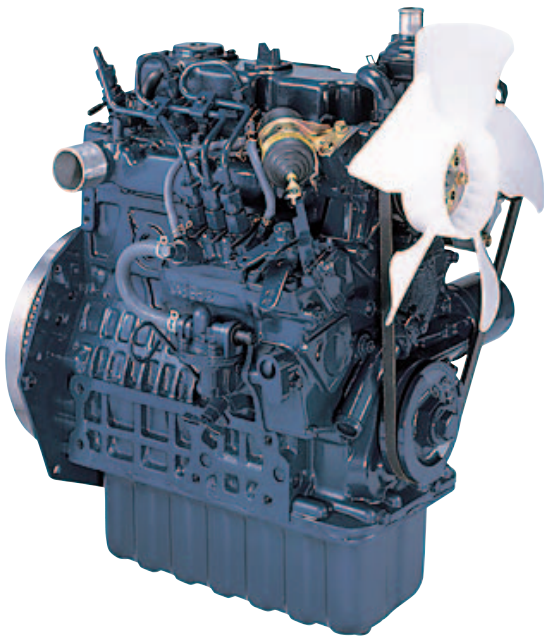
This compact excavator delivers the power you need, the control you want, and the smooth performance you demand.



Technology



Advanced functions pooling the essence of Kubota technologies.



■ Powerful engine

13HP engine delivers the sufficient power and dependability your work requires. In addition to its superior horsepower and performance, it also offers low noise and vibration levels, exceptional fuel efficiency.



Kubota has been achieving a dominant position in the field of commercial industrial diesel engine (below 100HP).

■ NEW- H · M · S Hydraulic System

Kubota adopts "3 pump system", using three independent pumps for boom, arm and swivel to make the co-operation of bucket, boom and swivel smooth and efficient. It mounts high capacity control valve and hydraulic variable pumps to realize superb shoveling and loading performance.

● Strong bucket breakout force

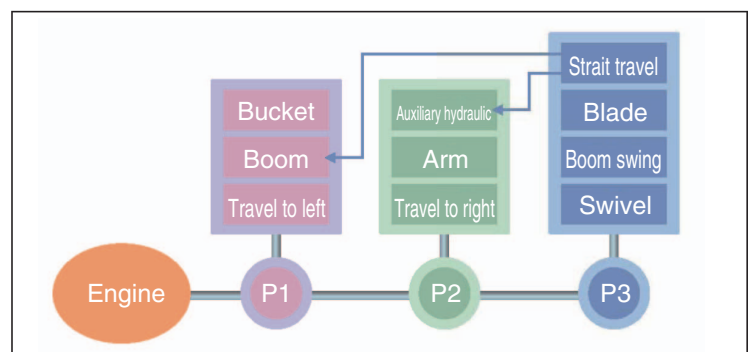
The U15-3 has the power you need for heavy loads and tough excavating jobs.

● Straight travel

Kubota's hydraulic matching system keeps the U15-3 traveling in a straight line while operating the boom, assisting in loading and off-loading.

● Four simultaneous operation

Bucket, boom, arm and swing can be operated simultaneously and smoothly.



Operational Performance

"One of a kind" features which only Kubota has realizes efficient working.

■ Working performance

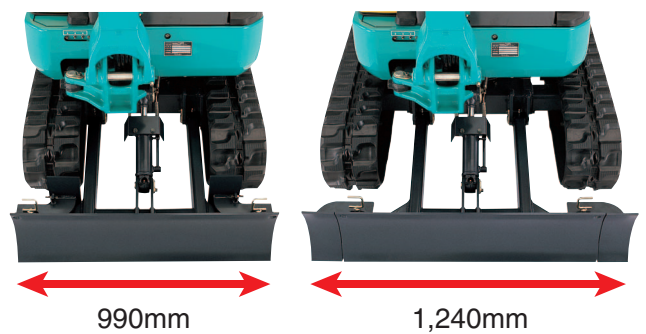
The U15-3's excellent reach and digging depth ensure that each digging job is performed with maximum efficiency and speed.

Max.bucket breakout force	1,545kgf(3,406 lbs.)
Max.digging depth	2,310mm
Max.digging radius	3,900mm
Max.vertical digging depth	1,910mm



■ Variable track width

The U15-3 features a hydraulic track gauge that can be adjusted to between 990mm to 1,240mm. With the touch of a single lever, you can reduce the track gauge to navigate narrow spaces or increase it to improve functionality.



Changing the blade width is as easy as removing one pin by hand.



■ Boom cylinder

Located above the boom, the boom cylinder remains safe from damage during breaker or dumping operations.



■ Boom swing

The boom swing realizes digging operation close to the house edge without put the machine in motion. Combined with zero-tail swing structure, the machine is very suitable for operations in tight places.

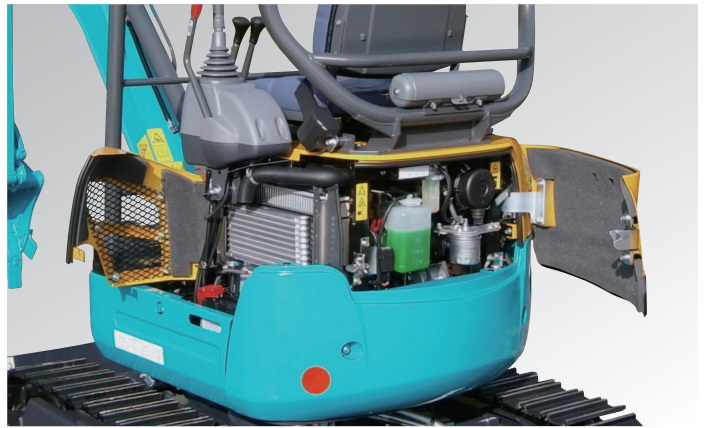


Easy Maintenance

If it's easy maintenance you're looking for, take a look at the U15-3.

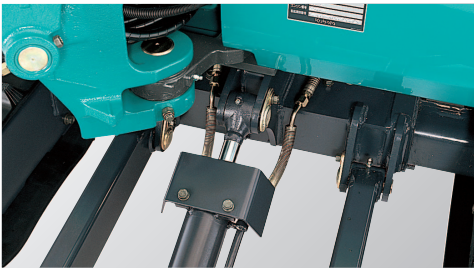
■ Wide-opening bonnets

Wide-opening covers provide easy access to the engine oil gauge, coolant reserve tank and dual element air cleaner. It's also easy to access the fuel filter and water separator, battery, radiator and oil coolant.



■ Two-piece dozer hose

Two-piece hose connections for the dozer simplify hose replacement, reduce downtime.



■ Track tension spring

The track tension spring helps durability of the crawler.



■ Protected hydraulic hoses

Reduce risk of breaking the hose during operation. Thanks to that both repair cost and machine down time are significantly reduced.



Applications

Kubota mini excavator is widely used in various construction fields such as road municipal works, pipe networks, gardening and water conservancy combination with the use of multiple attachments.

You may carry out operations at ease under various special conditions and construction environment.

The real world-class Kubota mini excavator is ready to take any challenge.



■ Agriculture



■ Canal / Drainage canal cleaning

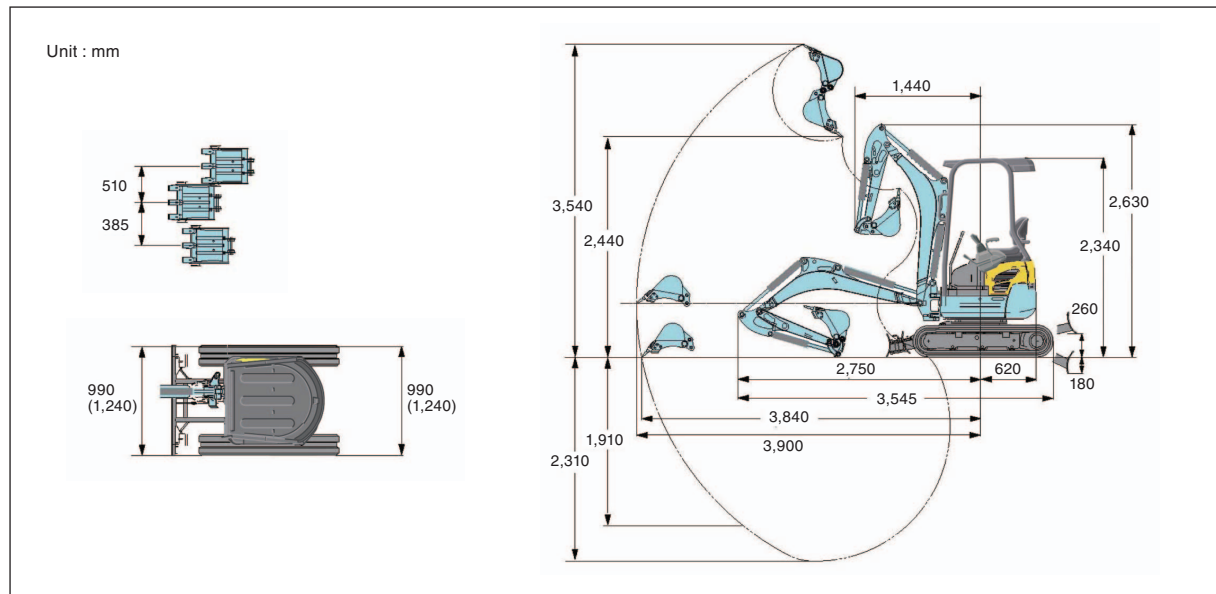


■ House foundation



■ Building construction

■ Working Range



■ Specifications

Model		U-15-3		
Bucket capacity	m ³	0.04		
Std. bucket width: (with/without cutting blade)	mm (ft. in.)	450/400 (1'5.7"/1'3.7")		
Operating weight	Kg (lbs.)	1,720 (3,792)		
Dimensions (In transport condition)	Overall length	mm (ft. in.)	3,575 (11'8.7")	
	Overall height	mm (ft. in.)	2,250 (7'4.6")	
	Overall width	mm (ft. in.)	990/1,240 (3'3"/4'0.8")	
	Min. ground clearance	mm (ft. in.)	145 (0'5.7")	
Engine	Model	D782-E2-BH7		
	Total displacement	L (gal)	0.778 (0.206)	
	Rated output	kW (HP)	9.6kW(13PS)/2,300rpm	
Digging Capacity	Max. digging height	mm (ft. in.)	3,540 (11'7.4")	
	Max. dumping height	mm (ft. in.)	2,440 (8'0.1")	
	Max. digging depth	mm (ft. in.)	2,310 (7'6.9")	
	Max. vertical wall digging depth	mm (ft. in.)	1,910 (6'3.2")	
	Max. digging radius	mm (ft. in.)	3,900 (12'9.5")	
	Boom swing: right/left	degree	58/65	
	Min. slewing radius of front part (swing)	mm (ft. in.)	1,425 (4'8.1")	
	Min. slewing radius of rear part	mm (ft. in.)	620 (2'0.4")	
Max. digging force (bucket)	kgf (lbs.)	1,545 (3,406.1)		
Track type	Steel			
Track width	mm (ft. in.)	230 (0'9.1")		
Travel section	Overall length of track	mm (ft. in.)	1,585 (5'2.4")	
	Wheel base	mm (ft. in.)	1,230 (4'0.4")	
	Track gauge	mm (ft. in.)	760/1,010 (2'5.9"/3'3.8")	
	Travel speed (1st/2nd gear)	km/h (mph)	2.2/4.3 (1.4/2.7)	
	Gradeability	degree	30	
Swing speed	rpm	8.7		
Blade	Blade (width)	mm (ft. in.)	990/1,240 (3'3"/4'0.8")	
	Blade (height)	mm (ft. in.)	265 (0'10.4")	
	Lift height (GL up/down)	mm (ft. in.)	260/180 (0'10.4"/0'7.1")	
Pump	Hydraulic pump type	Variable pump x 2 + gear pump x 1		
	Flow Rate P1/P2	L	16.6	
	Flow Rate P3	L	10.4	
Swing motor type	Orbit motor			
Travel motor type	Hydraulic piston motor: 2F			
Fuel tank capacity	L (gal)	18 (4.756)		

These specifications are subject to change without notice.